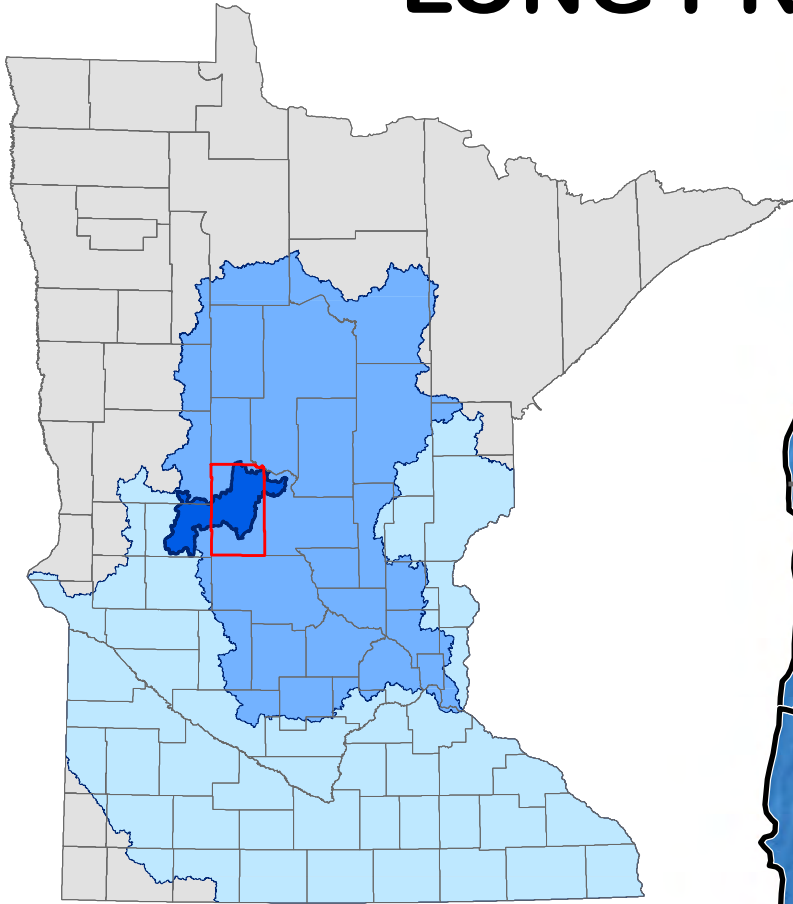
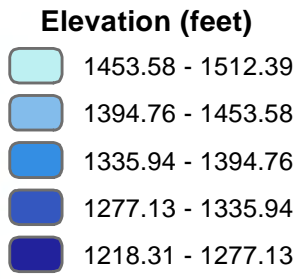
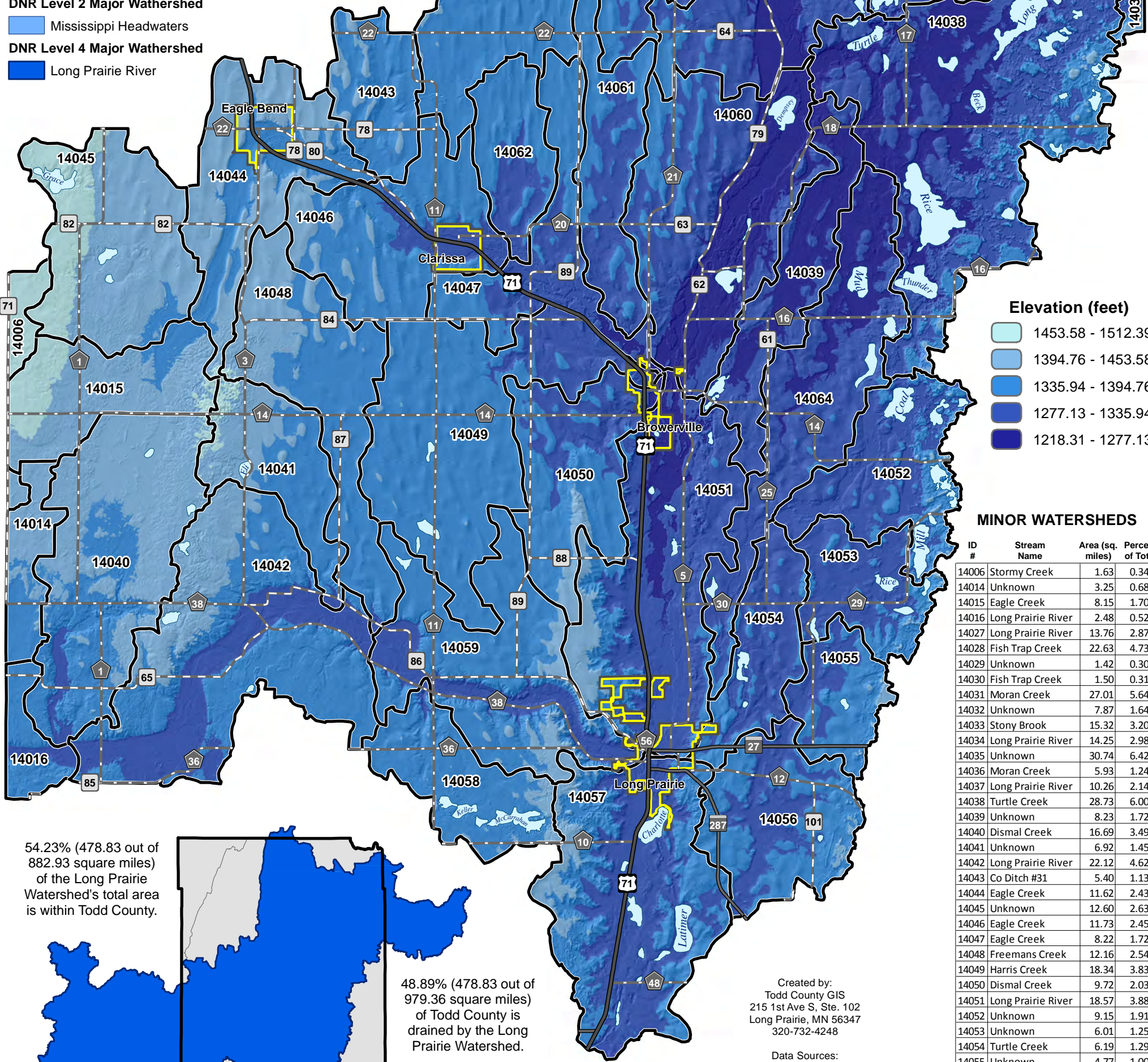


LONG PRAIRIE WATERSHED



- Minor Watershed Boundary
- Lake
- City Limit
- Divided U.S. Highway
- U.S. Highway
- State Highway
- County State Aid Highway
- County Road

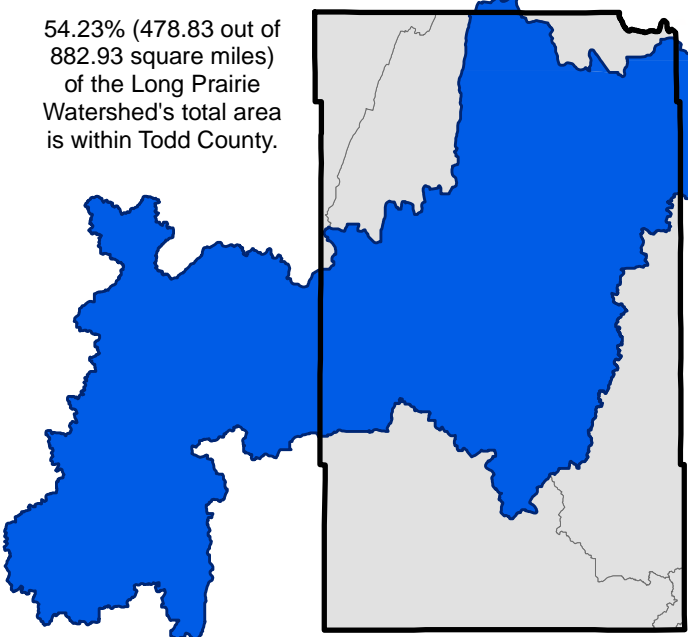
- DNR Level 1 Major Watershed
- Upper Mississippi
- DNR Level 2 Major Watershed
- Mississippi Headwaters
- DNR Level 4 Major Watershed
- Long Prairie River
- Todd County Boundary
- County Boundary



MINOR WATERSHEDS

ID #	Stream Name	Area (sq. miles)	Percent of Total
14006	Stormy Creek	1.63	0.34%
14014	Unknown	3.25	0.68%
14015	Eagle Creek	8.15	1.70%
14016	Long Prairie River	2.48	0.52%
14027	Long Prairie River	13.76	2.87%
14028	Fish Trap Creek	22.63	4.73%
14029	Unknown	1.42	0.30%
14030	Fish Trap Creek	1.50	0.31%
14031	Moran Creek	27.01	5.64%
14032	Unknown	7.87	1.64%
14033	Stony Brook	15.32	3.20%
14034	Long Prairie River	14.25	2.98%
14035	Unknown	30.74	6.42%
14036	Moran Creek	5.93	1.24%
14037	Long Prairie River	10.26	2.14%
14038	Turtle Creek	28.73	6.00%
14039	Unknown	8.23	1.72%
14040	Dismal Creek	16.69	3.49%
14041	Unknown	6.92	1.45%
14042	Long Prairie River	22.12	4.62%
14043	Co Ditch #31	5.40	1.13%
14044	Eagle Creek	11.62	2.43%
14045	Unknown	12.60	2.63%
14046	Eagle Creek	11.73	2.45%
14047	Eagle Creek	8.22	1.72%
14048	Freemans Creek	12.16	2.54%
14049	Harris Creek	18.34	3.83%
14050	Dismal Creek	9.72	2.03%
14051	Long Prairie River	18.57	3.88%
14052	Unknown	9.15	1.91%
14053	Unknown	6.01	1.25%
14054	Turtle Creek	6.19	1.29%
14055	Unknown	4.77	1.00%
14056	Turtle Creek	9.64	2.01%
14057	Venewitz Creek	18.16	3.79%
14058	Unknown	7.27	1.52%
14059	Long Prairie Creek	15.40	3.22%
14060	Long Prairie River	18.49	3.86%
14061	Unknown	7.24	1.51%
14062	Unknown	5.26	1.10%
14064	Unknown	13.99	2.92%
Total		478.83	100.00%

54.23% (478.83 out of 882.93 square miles) of the Long Prairie Watershed's total area is within Todd County.

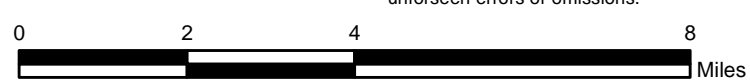


48.89% (478.83 out of 979.36 square miles) of Todd County is drained by the Long Prairie Watershed.

Created by:
Todd County GIS
215 1st Ave S, Ste. 102
Long Prairie, MN 56347
320-732-4248

Data Sources:
Watershed Data - MN Department of Natural Resources
Elevation Data - MN Geospatial Information Office
County Data - Todd County GIS

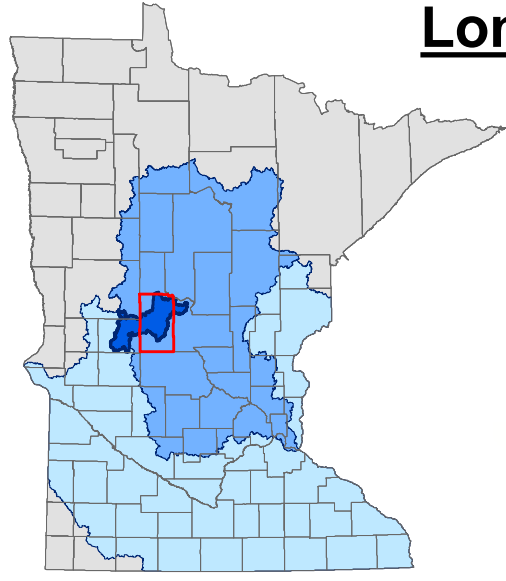
Todd County GIS has made every effort to provide the most accurate and up-to-date information available and cannot be held responsible for any unforeseen errors or omissions.



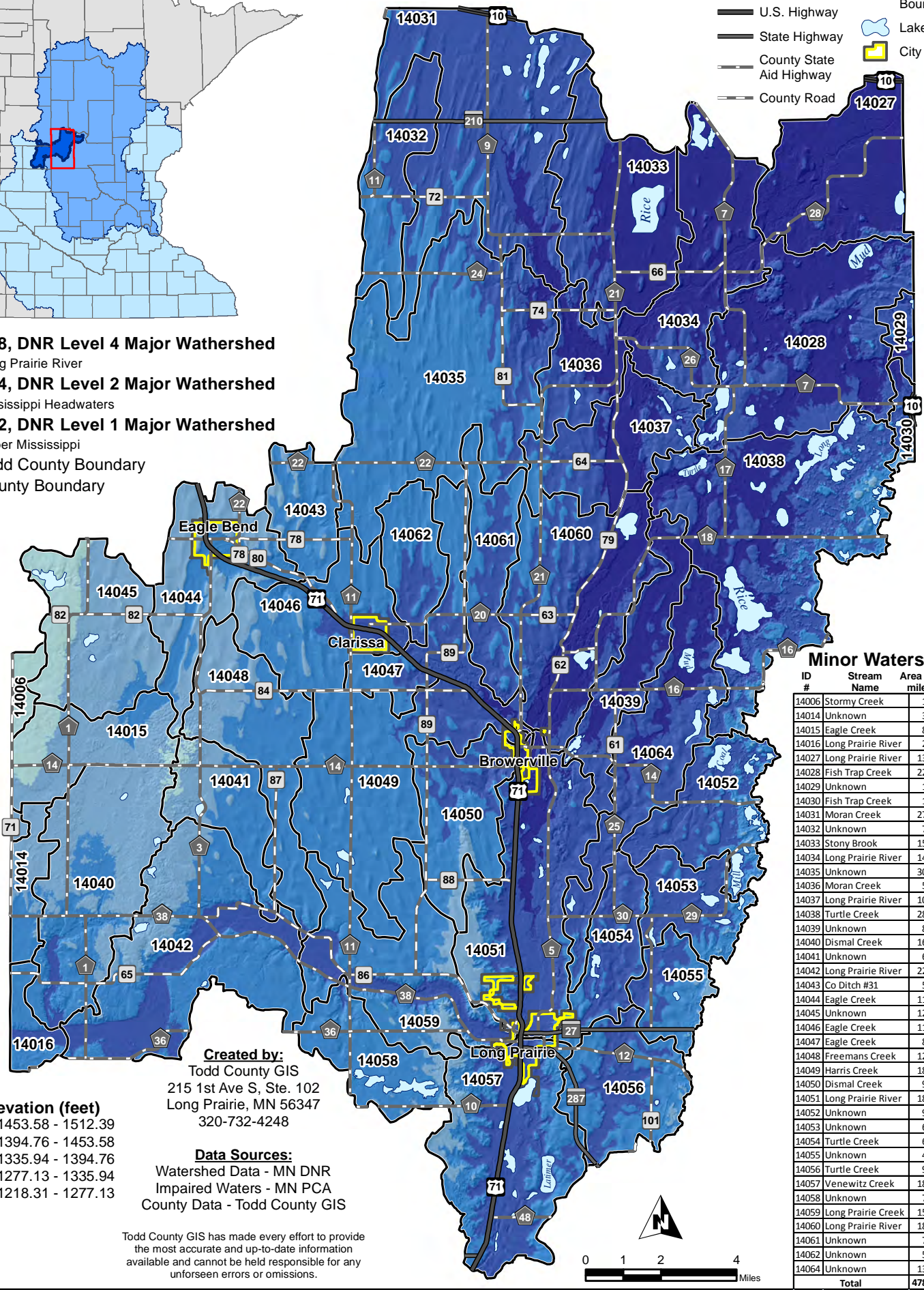
Long Prairie Watershed

Minor Watersheds

- Divided U.S. Highway
- U.S. Highway
- State Highway
- County State Aid Highway
- County Road
- Minor Watershed Boundary
- Lake
- City Limit



- HUC 8, DNR Level 4 Major Watershed**
- Long Prairie River
- HUC 4, DNR Level 2 Major Watershed**
- Mississippi Headwaters
- HUC 2, DNR Level 1 Major Watershed**
- Upper Mississippi
- Todd County Boundary
- County Boundary



Minor Watersheds

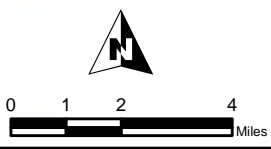
ID #	Stream Name	Area (sq. miles)	Percent of Total
14006	Stormy Creek	1.63	0.34%
14014	Unknown	3.25	0.68%
14015	Eagle Creek	8.15	1.70%
14016	Long Prairie River	2.48	0.52%
14027	Long Prairie River	13.76	2.87%
14028	Fish Trap Creek	22.63	4.73%
14029	Unknown	1.42	0.30%
14030	Fish Trap Creek	1.50	0.31%
14031	Moran Creek	27.01	5.64%
14032	Unknown	7.87	1.64%
14033	Stony Brook	15.32	3.20%
14034	Long Prairie River	14.25	2.98%
14035	Unknown	30.74	6.42%
14036	Moran Creek	5.93	1.24%
14037	Long Prairie River	10.26	2.14%
14038	Turtle Creek	28.73	6.00%
14039	Unknown	8.23	1.72%
14040	Dismal Creek	16.69	3.49%
14041	Unknown	6.92	1.45%
14042	Long Prairie River	22.12	4.62%
14043	Co Ditch #31	5.40	1.13%
14044	Eagle Creek	11.62	2.43%
14045	Unknown	12.60	2.63%
14046	Eagle Creek	11.73	2.45%
14047	Eagle Creek	8.22	1.72%
14048	Freemans Creek	12.16	2.54%
14049	Harris Creek	18.34	3.83%
14050	Dismal Creek	9.72	2.03%
14051	Long Prairie River	18.57	3.88%
14052	Unknown	9.15	1.91%
14053	Unknown	6.01	1.25%
14054	Turtle Creek	6.19	1.29%
14055	Unknown	4.77	1.00%
14056	Turtle Creek	9.64	2.01%
14057	Venewitz Creek	18.16	3.79%
14058	Unknown	7.27	1.52%
14059	Long Prairie Creek	15.40	3.22%
14060	Long Prairie River	18.49	3.86%
14061	Unknown	7.24	1.51%
14062	Unknown	5.26	1.10%
14064	Unknown	13.99	2.92%
Total		478.83	100.00%

Created by:
Todd County GIS
215 1st Ave S, Ste. 102
Long Prairie, MN 56347
320-732-4248

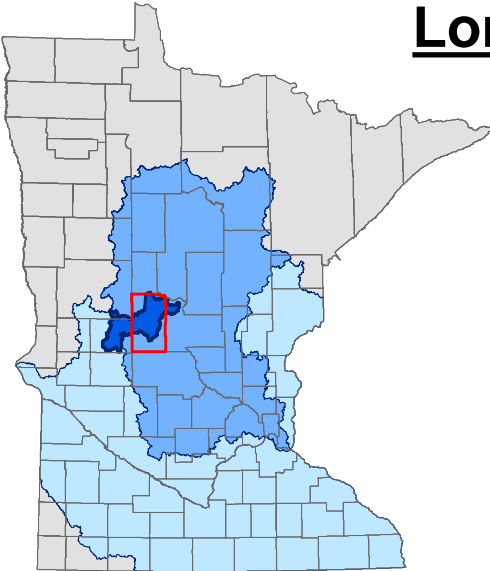
Data Sources:
Watershed Data - MN DNR
Impaired Waters - MN PCA
County Data - Todd County GIS

- Elevation (feet)**
- 1453.58 - 1512.39
 - 1394.76 - 1453.58
 - 1335.94 - 1394.76
 - 1277.13 - 1335.94
 - 1218.31 - 1277.13

Todd County GIS has made every effort to provide the most accurate and up-to-date information available and cannot be held responsible for any unforeseen errors or omissions.



Long Prairie Watershed Impaired Waters



HUC 8, DNR Level 4 Major Watershed

Long Prairie River

HUC 4, DNR Level 2 Major Watershed

Mississippi Headwaters

HUC 2, DNR Level 1 Major Watershed

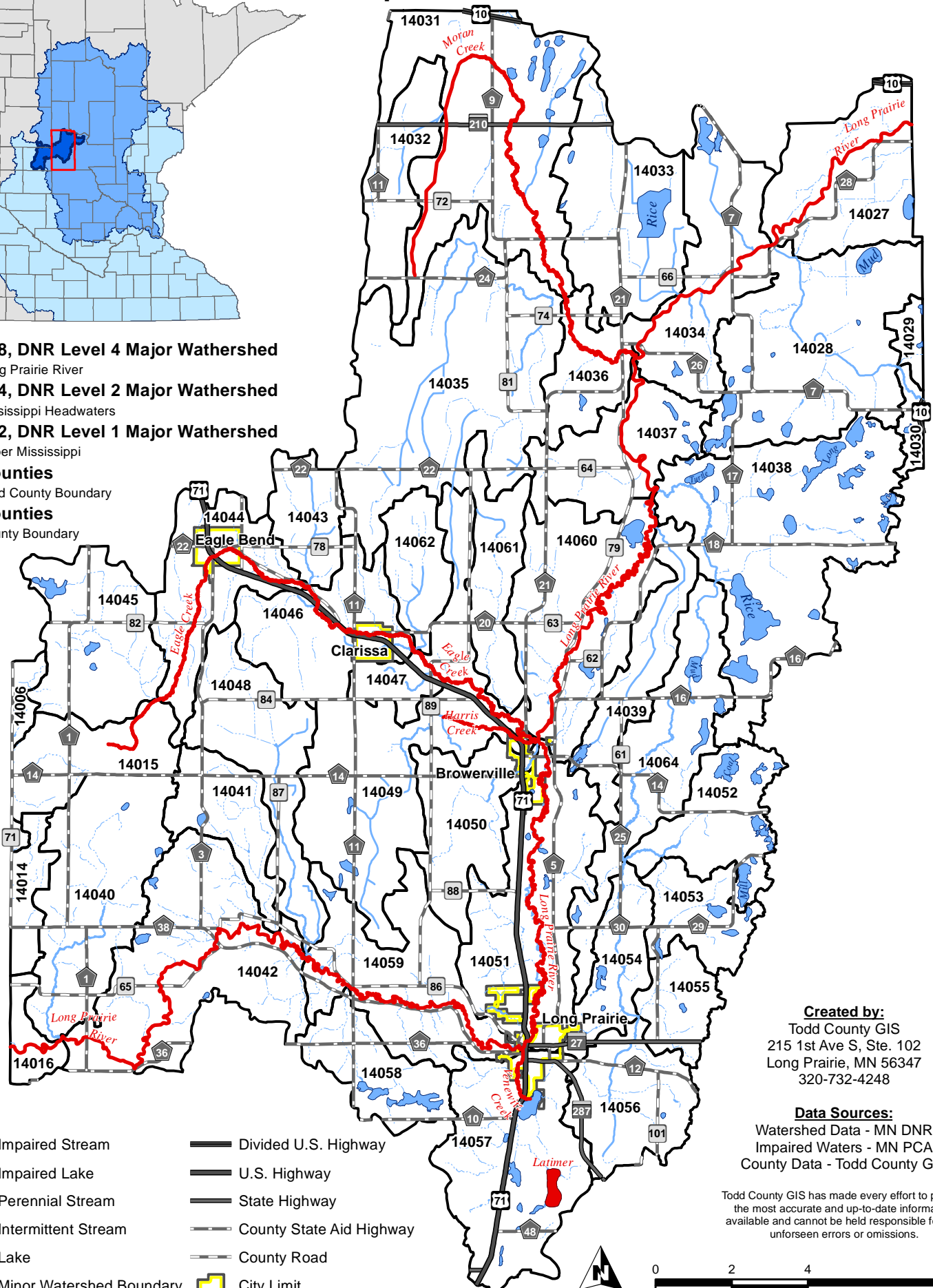
Upper Mississippi

mncounties

Todd County Boundary

mncounties

County Boundary



- Impaired Stream
- Impaired Lake
- Perennial Stream
- Intermittent Stream
- Lake
- Minor Watershed Boundary
- City Limit

- Divided U.S. Highway
- U.S. Highway
- State Highway
- County State Aid Highway
- County Road

Created by:
 Todd County GIS
 215 1st Ave S, Ste. 102
 Long Prairie, MN 56347
 320-732-4248

Data Sources:
 Watershed Data - MN DNR
 Impaired Waters - MN PCA
 County Data - Todd County GIS

Todd County GIS has made every effort to provide the most accurate and up-to-date information available and cannot be held responsible for any unforeseen errors or omissions.



Long Prairie Watershed

High Capacity Wells and Surficial Aquifer Thickness

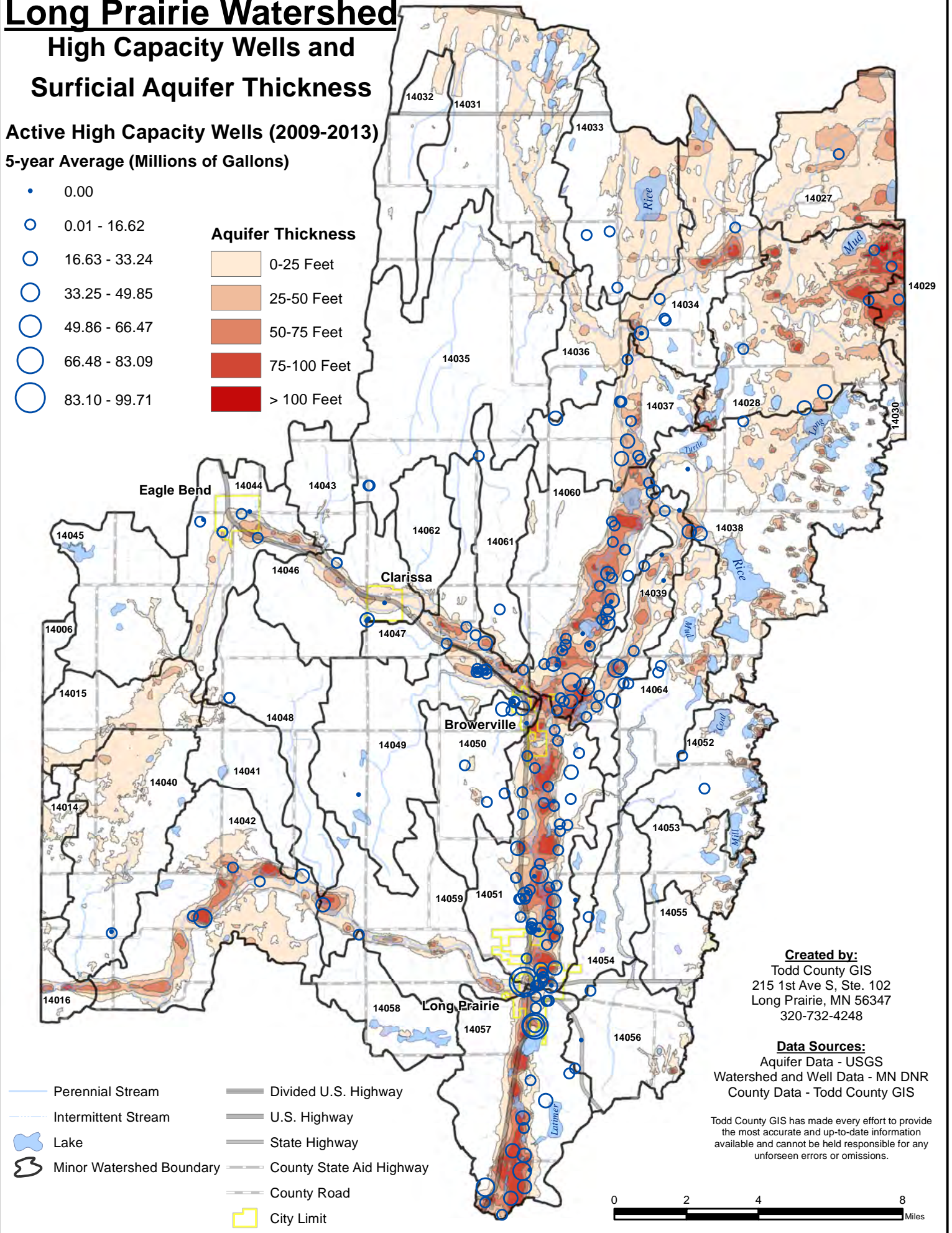
Active High Capacity Wells (2009-2013)

5-year Average (Millions of Gallons)

- 0.00
- 0.01 - 16.62
- 16.63 - 33.24
- 33.25 - 49.85
- 49.86 - 66.47
- 66.48 - 83.09
- 83.10 - 99.71

Aquifer Thickness

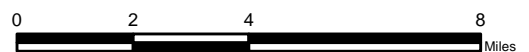
- 0-25 Feet
- 25-50 Feet
- 50-75 Feet
- 75-100 Feet
- > 100 Feet



Created by:
 Todd County GIS
 215 1st Ave S, Ste. 102
 Long Prairie, MN 56347
 320-732-4248

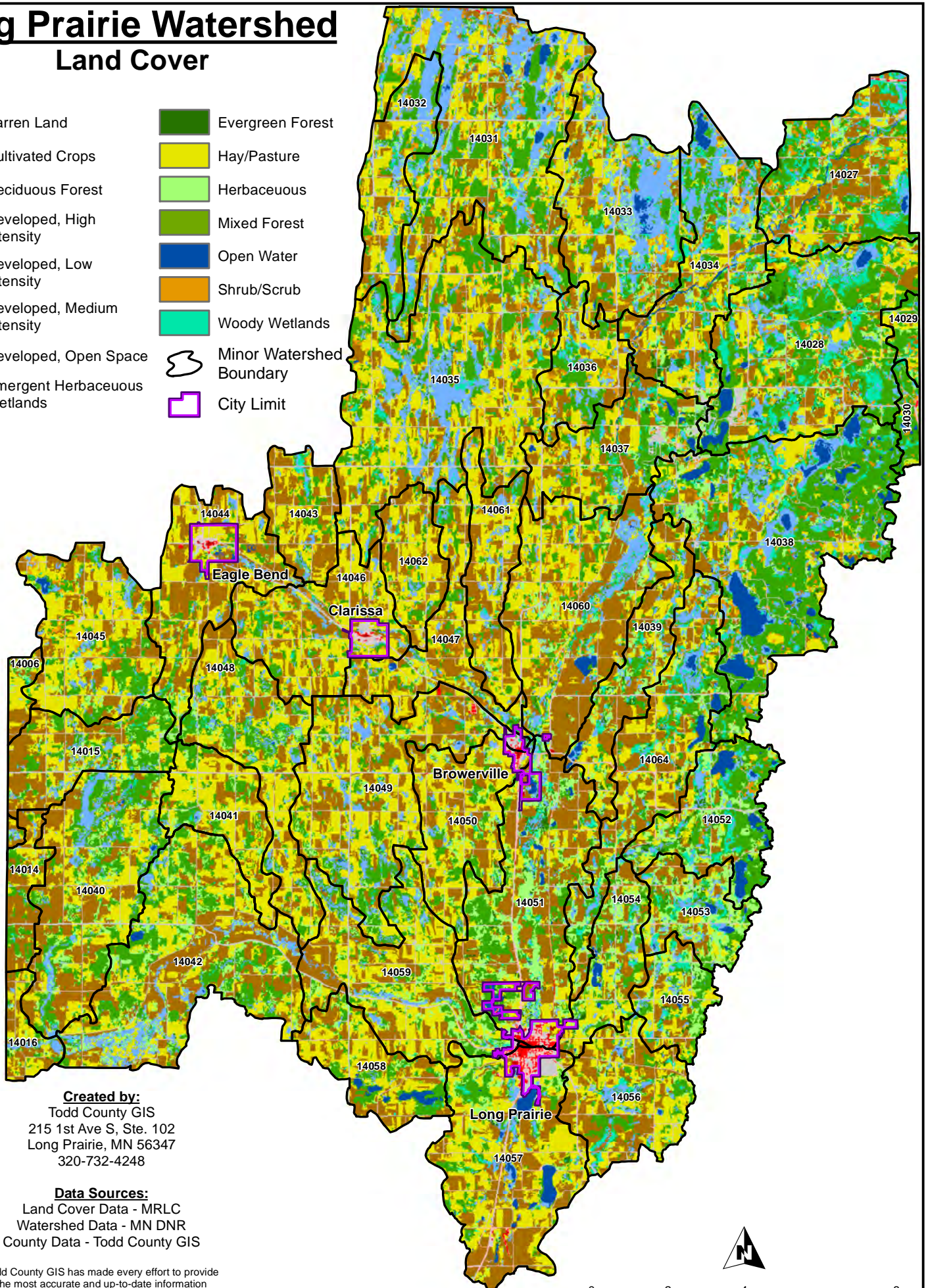
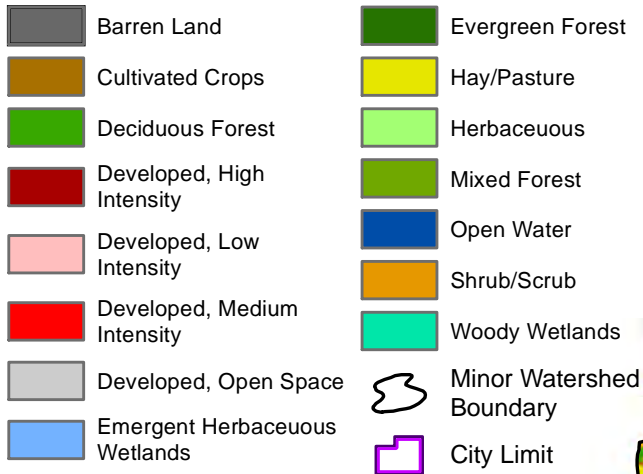
Data Sources:
 Aquifer Data - USGS
 Watershed and Well Data - MN DNR
 County Data - Todd County GIS

Todd County GIS has made every effort to provide the most accurate and up-to-date information available and cannot be held responsible for any unforeseen errors or omissions.



Long Prairie Watershed

Land Cover



Created by:

Todd County GIS
 215 1st Ave S, Ste. 102
 Long Prairie, MN 56347
 320-732-4248

Data Sources:


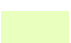








Land Cover Data - MRLC
 Watershed Data - MN DNR
 County Data - Todd County GIS

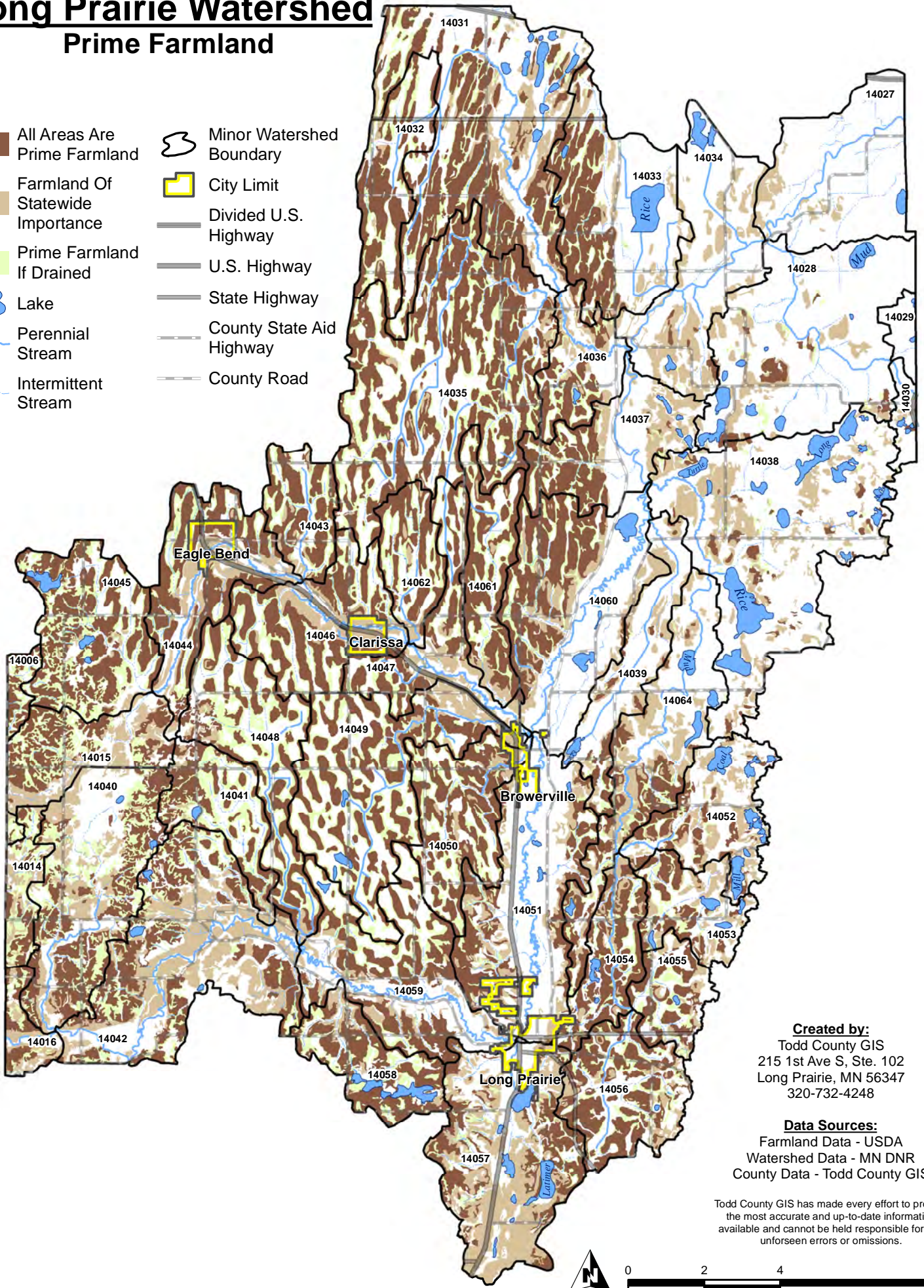
Todd County GIS has made every effort to provide the most accurate and up-to-date information available and cannot be held responsible for any unforeseen errors or omissions.



Long Prairie Watershed

Prime Farmland

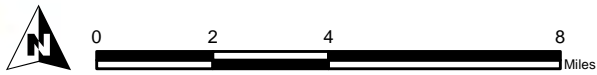
-  All Areas Are Prime Farmland
-  Farmland Of Statewide Importance
-  Prime Farmland If Drained
-  Lake
-  Perennial Stream
-  Intermittent Stream
-  Minor Watershed Boundary
-  City Limit
-  Divided U.S. Highway
-  U.S. Highway
-  State Highway
-  County State Aid Highway
-  County Road



















Created by:
 Todd County GIS
 215 1st Ave S, Ste. 102
 Long Prairie, MN 56347
 320-732-4248

Data Sources:
 Farmland Data - USDA
 Watershed Data - MN DNR
 County Data - Todd County GIS

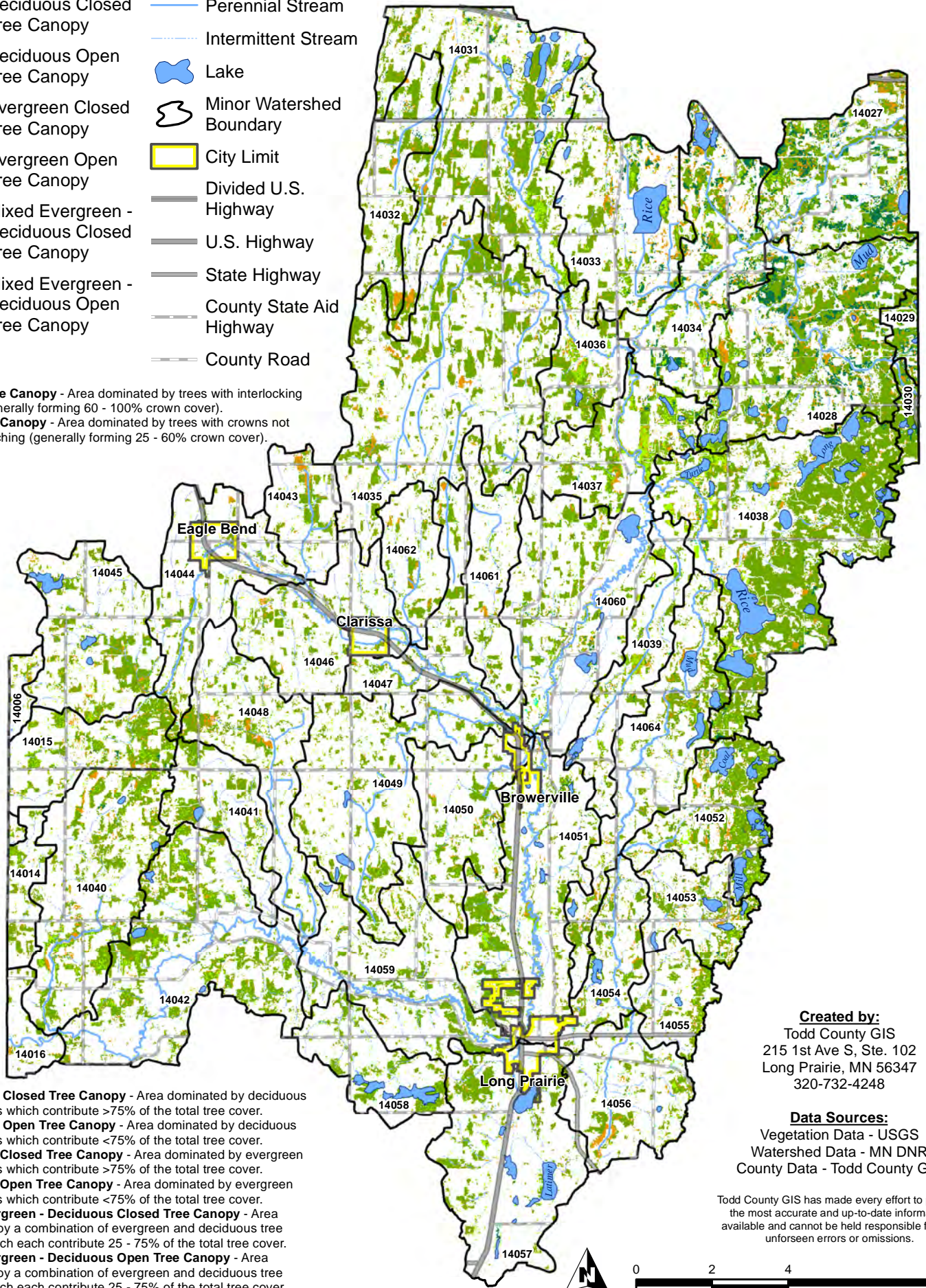
Todd County GIS has made every effort to provide the most accurate and up-to-date information available and cannot be held responsible for any unforeseen errors or omissions.



Long Prairie Watershed Forests

-  Deciduous Closed Tree Canopy
-  Deciduous Open Tree Canopy
-  Evergreen Closed Tree Canopy
-  Evergreen Open Tree Canopy
-  Mixed Evergreen - Deciduous Closed Tree Canopy
-  Mixed Evergreen - Deciduous Open Tree Canopy
-  Perennial Stream
-  Intermittent Stream
-  Lake
-  Minor Watershed Boundary
-  City Limit
-  Divided U.S. Highway
-  U.S. Highway
-  State Highway
-  County State Aid Highway
-  County Road

Closed Tree Canopy - Area dominated by trees with interlocking crowns (generally forming 60 - 100% crown cover).
Open Tree Canopy - Area dominated by trees with crowns not usually touching (generally forming 25 - 60% crown cover).

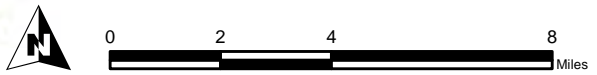


Deciduous Closed Tree Canopy - Area dominated by deciduous tree species which contribute >75% of the total tree cover.
Deciduous Open Tree Canopy - Area dominated by deciduous tree species which contribute <75% of the total tree cover.
Evergreen Closed Tree Canopy - Area dominated by evergreen tree species which contribute >75% of the total tree cover.
Evergreen Open Tree Canopy - Area dominated by evergreen tree species which contribute <75% of the total tree cover.
Mixed Evergreen - Deciduous Closed Tree Canopy - Area dominated by a combination of evergreen and deciduous tree species which each contribute 25 - 75% of the total tree cover.
Mixed Evergreen - Deciduous Open Tree Canopy - Area dominated by a combination of evergreen and deciduous tree species which each contribute 25 - 75% of the total tree cover.

Created by:
 Todd County GIS
 215 1st Ave S, Ste. 102
 Long Prairie, MN 56347
 320-732-4248

Data Sources:
 Vegetation Data - USGS
 Watershed Data - MN DNR
 County Data - Todd County GIS








Todd County GIS has made every effort to provide the most accurate and up-to-date information available and cannot be held responsible for any unforeseen errors or omissions.

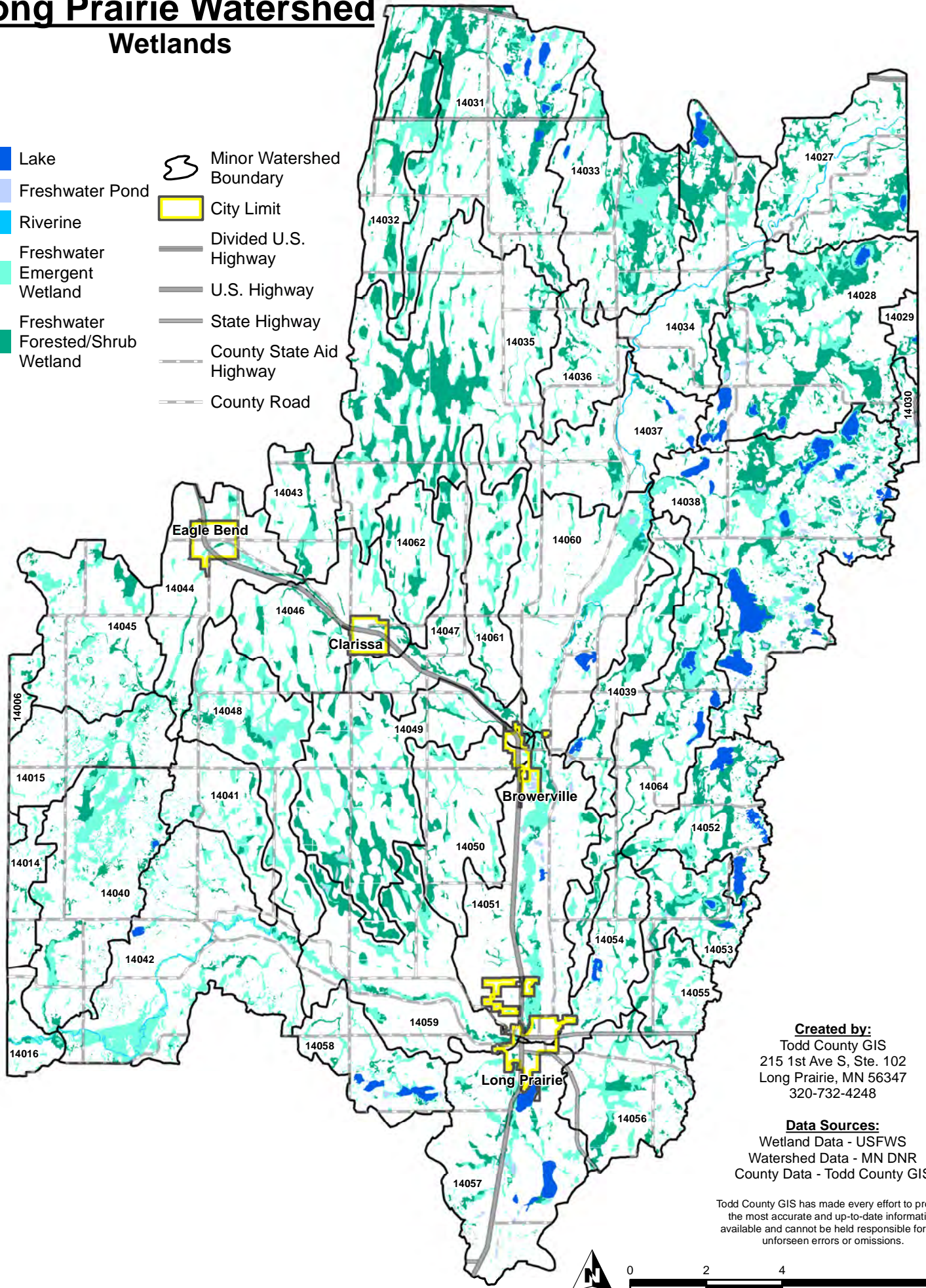


Long Prairie Watershed

Wetlands

-  Lake
-  Freshwater Pond
-  Riverine
-  Freshwater Emergent Wetland
-  Freshwater Forested/Shrub Wetland

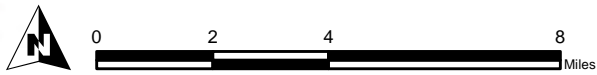
-  Minor Watershed Boundary
-  City Limit
-  Divided U.S. Highway
-  U.S. Highway
-  State Highway
-  County State Aid Highway
-  County Road



Created by:
 Todd County GIS
 215 1st Ave S, Ste. 102
 Long Prairie, MN 56347
 320-732-4248

Data Sources:
 Wetland Data - USFWS
 Watershed Data - MN DNR
 County Data - Todd County GIS

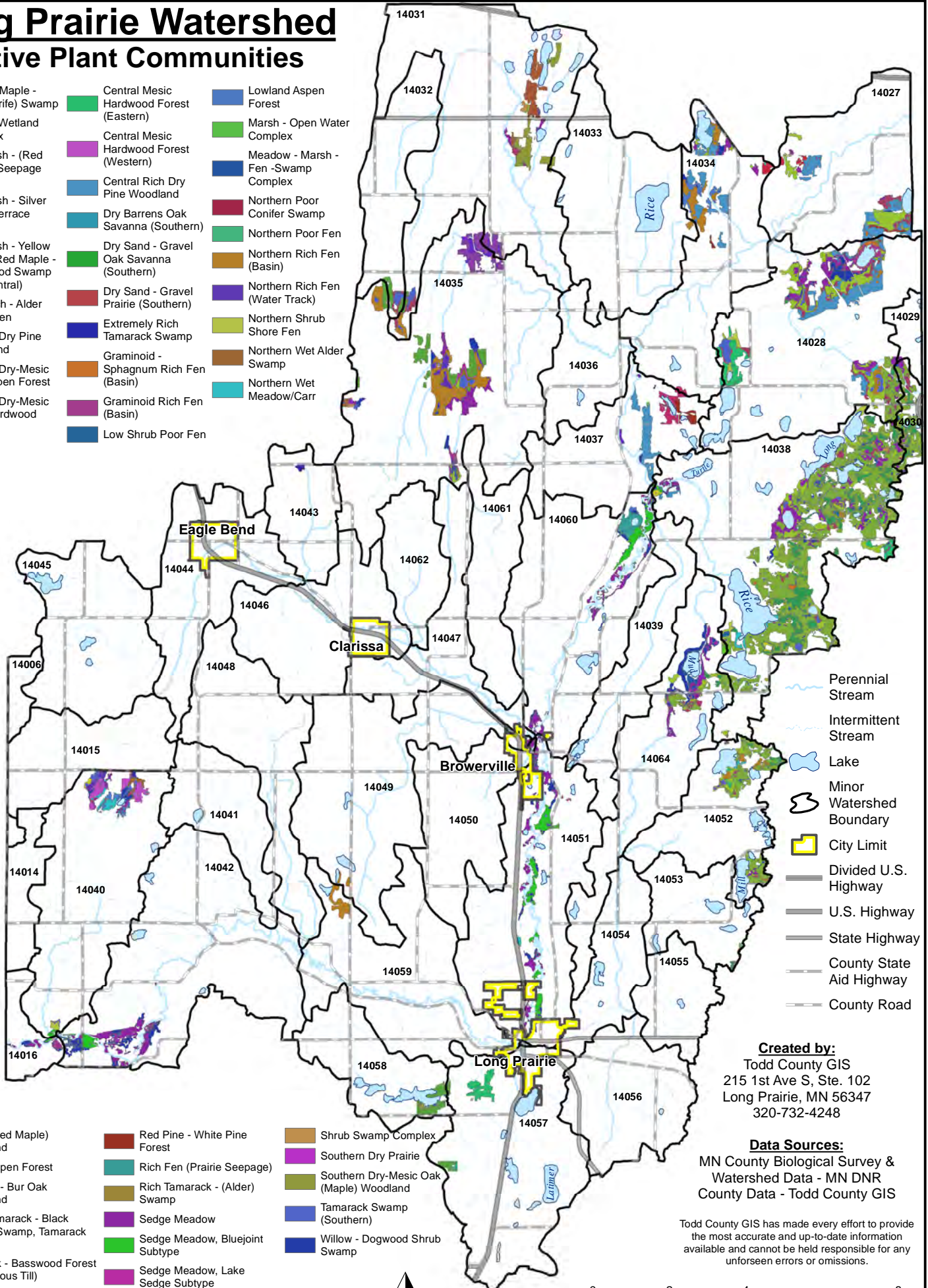
Todd County GIS has made every effort to provide the most accurate and up-to-date information available and cannot be held responsible for any unforeseen errors or omissions.



Long Prairie Watershed

Native Plant Communities

- | | | |
|---|--|--------------------------------------|
| Alder - (Maple - Loosestrife) Swamp | Central Mesic Hardwood Forest (Eastern) | Lowland Aspen Forest |
| Beaver Wetland Complex | Central Mesic Hardwood Forest (Western) | Marsh - Open Water Complex |
| Black Ash - (Red Maple) Seepage Swamp | Central Rich Dry Pine Woodland | Meadow - Marsh - Fen - Swamp Complex |
| Black Ash - Silver Maple Terrace Forest | Dry Barrens Oak Savanna (Southern) | Northern Poor Conifer Swamp |
| Black Ash - Yellow Birch - Red Maple - Basswood Swamp (Eastcentral) | Dry Sand - Gravel Oak Savanna (Southern) | Northern Poor Fen |
| Bog birch - Alder Shore Fen | Dry Sand - Gravel Prairie (Southern) | Northern Rich Fen (Basin) |
| Central Dry Pine Woodland | Extremely Rich Tamarack Swamp | Northern Rich Fen (Water Track) |
| Central Dry-Mesic Oak-Aspen Forest | Graminoid - Sphagnum Rich Fen (Basin) | Northern Shrub Shore Fen |
| Central Dry-Mesic Pine-Hardwood Forest | Graminoid Rich Fen (Basin) | Northern Wet Alder Swamp |
| | Low Shrub Poor Fen | Northern Wet Meadow/Carr |



- Perennial Stream
- Intermittent Stream
- Lake
- Minor Watershed Boundary
- City Limit
- Divided U.S. Highway
- U.S. Highway
- State Highway
- County State Aid Highway
- County Road

- | | | |
|--|----------------------------------|---|
| Oak - (Red Maple) Woodland | Red Pine - White Pine Forest | Shrub Swamp Complex |
| Oak - Aspen Forest | Rich Fen (Prairie Seepage) | Southern Dry Prairie |
| Pin Oak - Bur Oak Woodland | Rich Tamarack - (Alder) Swamp | Southern Dry-Mesic Oak (Maple) Woodland |
| Poor Tamarack - Black Spruce Swamp, Tamarack Subtype | Sedge Meadow | Tamarack Swamp (Southern) |
| Red Oak - Basswood Forest (Calcareous Till) | Sedge Meadow, Bluejoint Subtype | Willow - Dogwood Shrub Swamp |
| Red Oak - Basswood Forest (Noncalcareous Till) | Sedge Meadow, Lake Sedge Subtype | |
| | Shrub Rich Fen (Water Track) | |

Created by:
 Todd County GIS
 215 1st Ave S, Ste. 102
 Long Prairie, MN 56347
 320-732-4248

Data Sources:
 MN County Biological Survey & Watershed Data - MN DNR
 County Data - Todd County GIS

Todd County GIS has made every effort to provide the most accurate and up-to-date information available and cannot be held responsible for any unforeseen errors or omissions.

